

**Get 25% off AffiniPure® Rabbit Anti-GFP Antibodies | 1**

Green Fluorescent Protein (GFP) is a protein tag commonly used in fusion proteins as a reporter molecule. GFP has utility across numerous applications, including quantification of gene expression, protein localization within living organisms, characterization of protein interactions, and as a biosensor. The addition of an Anti-GFP antibody can often improve experimental performance and overcome limitations that use of the tag itself may incur. Jackson ImmunoResearch AffiniPure® Rabbit Anti-GFP is an affinity-purified polyclonal antibody raised in rabbit. It can be used to detect *Aequorea victoria* Green Fluorescent Protein (avGFP) and its derivatives, including EGFP, ECFP, and EYFP. This Fall, we are offering 25% off all AffiniPure® Rabbit Anti-GFP antibodies and conjugates. Learn More.



**Jackson ImmunoResearch**  
LABORATORIES, INC.

**NOW 25% OFF**

**Polyclonal AffiniPure®  
Rabbit Anti-GFP Antibody**

For the detection of (avGFP) and its derivatives, including EGFP, ECFP, and EYFP.

Available unconjugated or conjugated to reporter enzymes, Biotin, R-PE, or Alexa Fluor® dyes.

**See Offer**

**Versatile detection of the GFP protein across a range of applications**

AffiniPure® Rabbit Anti-GFP antibody can be used to amplify the signal from GFP expressed by cells in Immunohistochemistry (IHC) or Immunofluorescence (IF) experiments. Our rabbit polyclonal Anti-GFP antibody may also be used for immunoprecipitation (IP), ELISA, ICC, Flow cytometry, and Western Blotting.

For 25% off AffiniPure® Rabbit Anti-GFP Antibodies between now and the 31st of December 2025\*.

Click the button below and fill in the form to receive your discount code.

[Get 25% off AffiniPure® Rabbit Anti-GFP Antibodies](#)

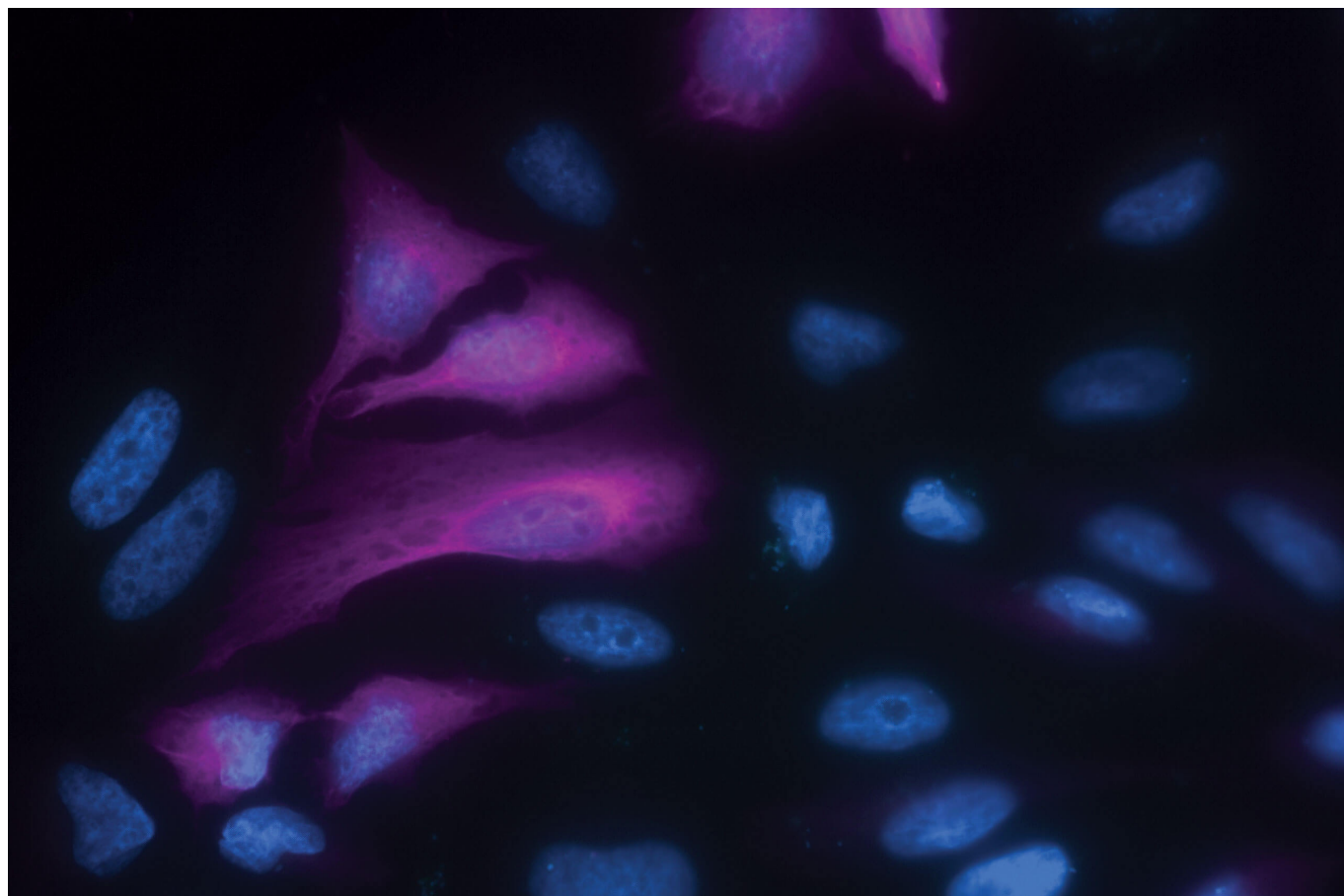
Once you've filled in the form you will receive a discount code that can be used to redeem a 25% discount off AffiniPure® Rabbit Anti-GFP Antibodies until 31st December 2025. Terms and conditions apply, see below.

## Imaging with AffiniPure® Rabbit Anti-GFP Antibodies

### Conjugates for immunofluorescence

Jackson ImmunoResearch AffiniPure® Rabbit Anti-GFP antibody is available conjugated to a range of reporter molecules. For fluorescence imaging, Jackson ImmunoResearch Rabbit Anti-GFP antibodies conjugated to Alexa Fluor® dyes can deliver bright target signal and spectacular signal amplification.

Anti-GFP antibody conjugates can add versatility to an assay when working around autofluorescence or equipment limitations, such as when another target occupies a laser line or channel. Using a fluorophore that emits in a different channel, Anti-GFP antibodies can circumvent these limitations, making them useful for detecting multiple targets in the same experiment.



**Figure 1:** Immunofluorescence microscopy of HeLa cells expressing a transiently transfected GFP fusion protein. Alexa Fluor® 647 Rabbit Anti-GFP detection of EGFP-tagged Tubulin protein.

Table 1: Rabbit Anti-GFP conjugates available.

Conjugate	Excitation Peak (nm)	Emission Peak (nm)
Alexa Fluor® 488	493	519
Alexa Fluor® 555	552	572
R-Phycoerythrin, R-PE	many, 488	580
Alexa Fluor® 568	577	602
Alexa Fluor® 594	591	614

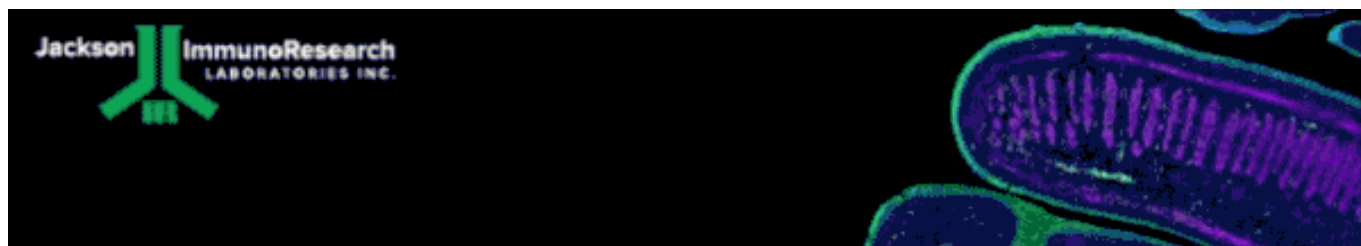
## Get 25% off AffiniPure® Rabbit Anti-GFP Antibodies | 3

Conjugate	Excitation Peak (nm)	Emission Peak (nm)
Alexa Fluor® 647	651	667
Alexa Fluor® 680	684	702
Alexa Fluor® 790	792	803

[Learn more about AffiniPure® Rabbit Anti-GFP Antibodies](#)

### Terms and conditions

- This offer is only available for direct purchases with Jackson ImmunoResearch US and JIR Europe. Promotion is not available to distribution partners or procurement platforms, such as Ariba and SciQuest.
- The discount code must be entered during the checkout process or at the time of order to receive the discount. For online orders, codes need to be redeemed in the comments section.
- The code can be used multiple times.
- The code is valid until December 31, 2025.
- This offer cannot be combined with or used in addition to any volume or institutional discount.



#### Learn more:

[Indirect and direct Western blotting](#)

[Meet the Marketing Team](#)

[An Introduction to Expansion Microscopy](#)

#### Do more:

[Exhibition Schedule](#)

[Western blotting guide](#)

[ELISA guide](#)